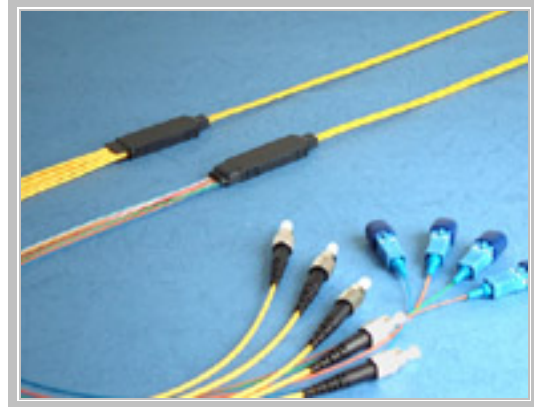


## Ribbon Fan-out cable

### Benefits

- ✓ 4, 6, 8 and 12 FO count available
- ✓ 2mm or 900um fan-out tube
- ✓ Replace large bundle of patch cords
- ✓ Save duct space and installation time
- ✓ High tensile strength



### Specification

|                         | <u>Conditions</u>        | <u>Values</u>         |
|-------------------------|--------------------------|-----------------------|
| Optical characteristics |                          | See patch cord Specs. |
| Tensitive load          | 2mm Fan-out tubing       | ≥ 5Kg                 |
| Operating Temperature   |                          | 0 °C up to +80 °C     |
| Vibration               | 10~58hz, 1.5mm Amplitude | ≤ 0.2dB               |

### Ordering code information

**Exemple:**    **FFO**   -   **9**   **8**   -   **5.0**   **M**   -   **LC**   /   **PC**   -   **2**   -   **0.5**   **M**   -   **MP**   /   **M**   -   **x**   -   **x.x**   **M**

1
2
3
4
5
6
7
8
9
10
11

- |           |                               |  |
|-----------|-------------------------------|--|
| <b>1</b>  | Fiber Type                    | "5" for MM 50/125, "6" for MM 62.5/125 and "9" for SM 9/125.   |
| <b>2</b>  | Fiber Count                   | "4" for fibers, "6" for 6 fibers, "8" for 8 fibers and "12" for 12 fibers  |
| <b>3</b>  | Total cable length ( meters ) |  |
| <b>4</b>  | Plug type                     | "FC" for FC type, "SC" for SC type, "ST" for ST type, "LC" for LC type, "E2" for E2000 type, "MU" for MU type and "MP" for MPO type. |
| <b>5</b>  | Finish type                   | "PC" for PC type, "UP" for UPC type, "AP" for APC type, "F" or "M" for Female or male on the MPO plug                                |
| <b>6</b>  | Tubing diameter on "A" side   | "2" for 2mm Fiber, "9" for 0.9mm fiber or "Blanck" for MPO   |
| <b>7</b>  | Fan-out length on "a" side    | ( in meters )  |
| <b>8</b>  | Plug type                     | "FC" for FC type, "SC" for SC type, "ST" for ST type, "LC" for LC type, "E2" for E2000 type, "MU" for MU type and "MP" for MPO type. |
| <b>9</b>  | Finish type                   | "PC" for PC type, "UP" for UPC type, "AP" for APC type, "F" or "M" for Female or Male on the MPO plug                                |
| <b>10</b> | Tubing diameter on "B" side   | "2" for 2mm Fiber, "9" for 0.9mm fiber or "Blanck" for MPO Plug  |
| <b>11</b> | Finish type                   | "PC" for PC type, "UP" for UPC type, "AP" for APC type, "F" or "M" for Female or Male on the MPO plug                                |